

Results for the six months ended 30 June 2020

Thursday, 23 July 2020

beazley

beautifully
designed
insurance

Disclaimer notice

Certain statements made in this presentation, both oral and written, are or may constitute "forward looking statements" with respect to the operation, performance and financial condition of the Company and/or the Group. These forward looking statements are not based on historical facts but rather reflect current beliefs and expectations regarding future events and results. Such forward looking statements can be identified from words such as "anticipates", "may", "will", "believes", "expects", "intends", "could", "should", "estimates", "predict" and similar expressions in such statements or the negative thereof, or other variations thereof or comparable terminology. These forward looking statements appear in a number of places throughout this document and involve significant inherent risks, uncertainties and other factors, known or unknown, which may cause the actual results, performance or achievements of the Company, or industry results, to be materially different from any future results, performance or achievements expressed or implied by such forward looking statements. Given these uncertainties, such forward looking statements should not be read as guarantees of future performance or results and no undue reliance should be placed on such forward looking statements. A number of factors could cause actual results to differ materially from the results discussed in these forward looking statements.

The information and opinions contained in this presentation, including any forward looking statements, are provided, and reflect knowledge and information available, as at the date of this presentation and are subject to change without notice. There is no intention, nor is any duty or obligation assumed by the Company, the Group or the Directors to supplement, amend, update or revise any of the information, including any forward looking statements, contained in this presentation.

All subsequent written and oral forward looking statements attributable to the Company and/or the Group or to persons acting on its behalf are expressly qualified in their entirety by the cautionary statements referred to above and contained elsewhere in this document.

Contents

• Overview	4-6
• Business update	6
• Financials	7-15
○ Performance	8
○ Investments	9-10
○ Reserves	11-14
○ Capital position	15
• In focus: Property	16-20
• The outlook	21-22
• Questions	23
• Appendix	24-35

Overview

beazley

beautifully
designed
insurance

Overview – strong premium growth

- **Gross premiums written increased by 12% to \$1,663.9m**
(30 June 2019: \$1,483.6m)
- **Rate change on renewal business 11%**
(30 June 2019: 5%)
- **Loss before income tax of \$13.8m**
(30 June 2019: Profit of \$166.4m)
- **Combined ratio of 107%**
(30 June 2019: 100%)
- **Prior year reserve releases of \$58.6m**
(30 June 2019: \$3.4m)
- **Investment return of \$83.2m**
(30 June 2019: \$170.3m)
- **Annualised return on equity of (1%)**
(30 June 2019: 19%)
- **No interim dividend declared**
(30 June 2019: 4.1p)

Business update

- Growth achieved across six of our seven divisions
- Market facilities split out from specialty lines
- Equity raise of \$292.6m to fund planned growth opportunities



- Bethany Greenwood succeeds Mike Donovan as head of cyber & executive risk division

COVID-19:

- Company has been successfully operating remotely for past four months
- Continued to deliver product launches including virtual care and product recall
- Impact expected to be \$170m net of reinsurance
 - PAC division (\$70m); property, marine, and reinsurance divisions (\$100m)
- Underwriting action taken to ensure exposure to potential claims on future business minimised

Financials

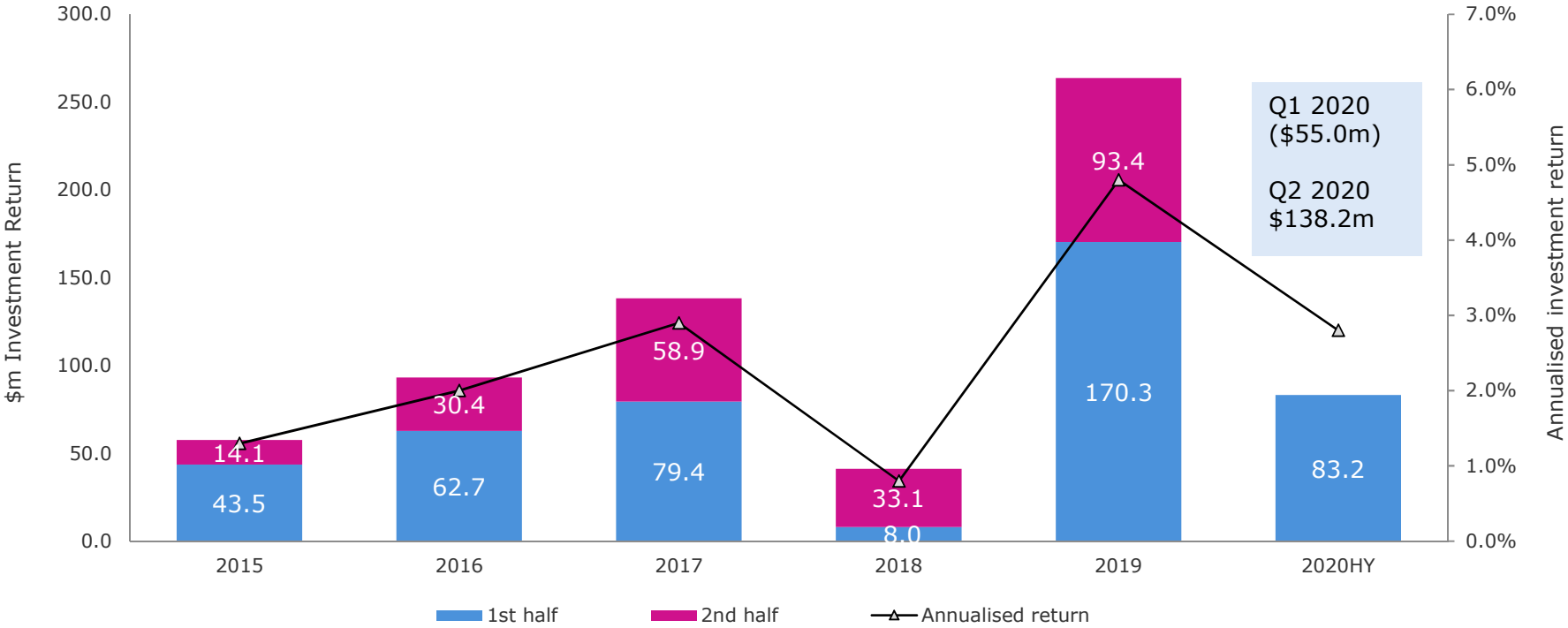
beazley

beautifully
designed
insurance

Six months financial performance

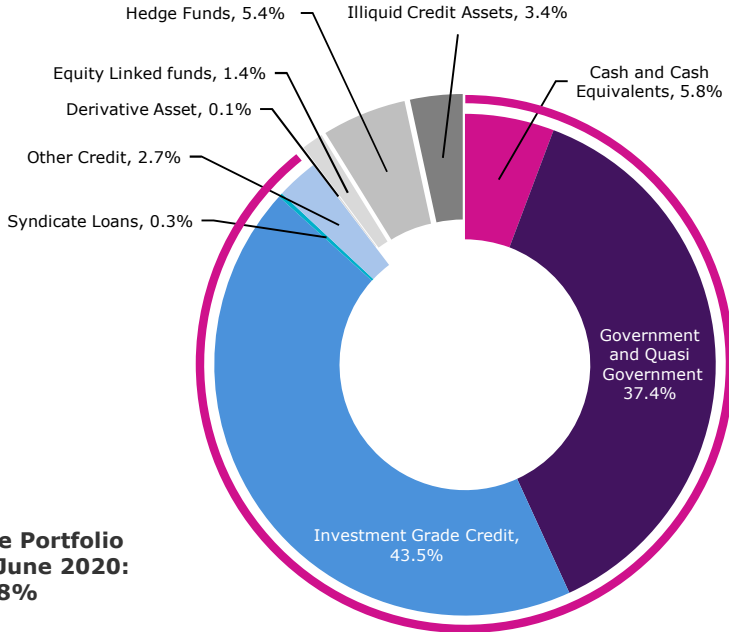
	6 months ended 30 June 2020	6 months ended 30 June 2019	% increase
Gross premiums written (\$m)	1,663.9	1,483.6	12%
Net premiums written (\$m)	1,317.8	1,225.5	8%
Net earned premiums (\$m)	1,233.8	1,118.0	10%
(Loss) / Profit before income tax (\$m)	(13.8)	166.4	
(Loss) / Earnings per share (pence)	(1.7)	20.4	
Dividend per share (pence)	-	4.1	
Net assets per share (pence)	239.0	232.3	
Net tangible assets per share (pence)	222.9	214.2	

Strong investment return in volatile market



Active portfolio management in uncertain markets

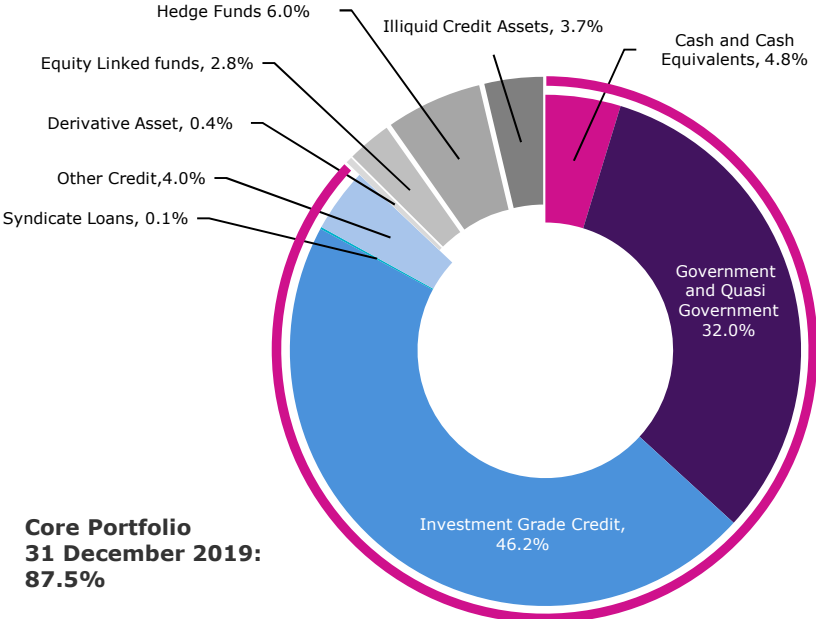
30 June 2020



**Core Portfolio
30 June 2020:
89.8%**

Core portfolio

31 December 2019

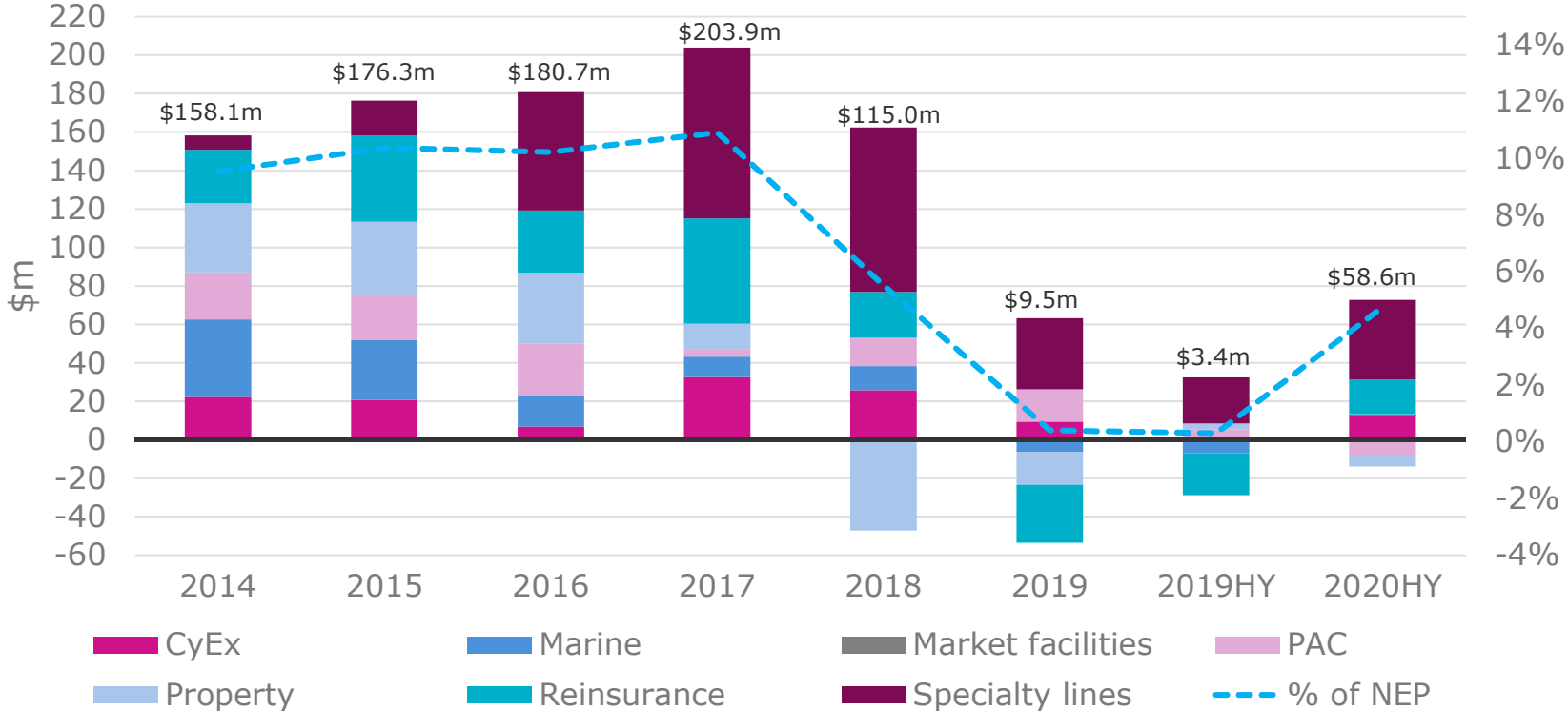


**Core Portfolio
31 December 2019:
87.5%**

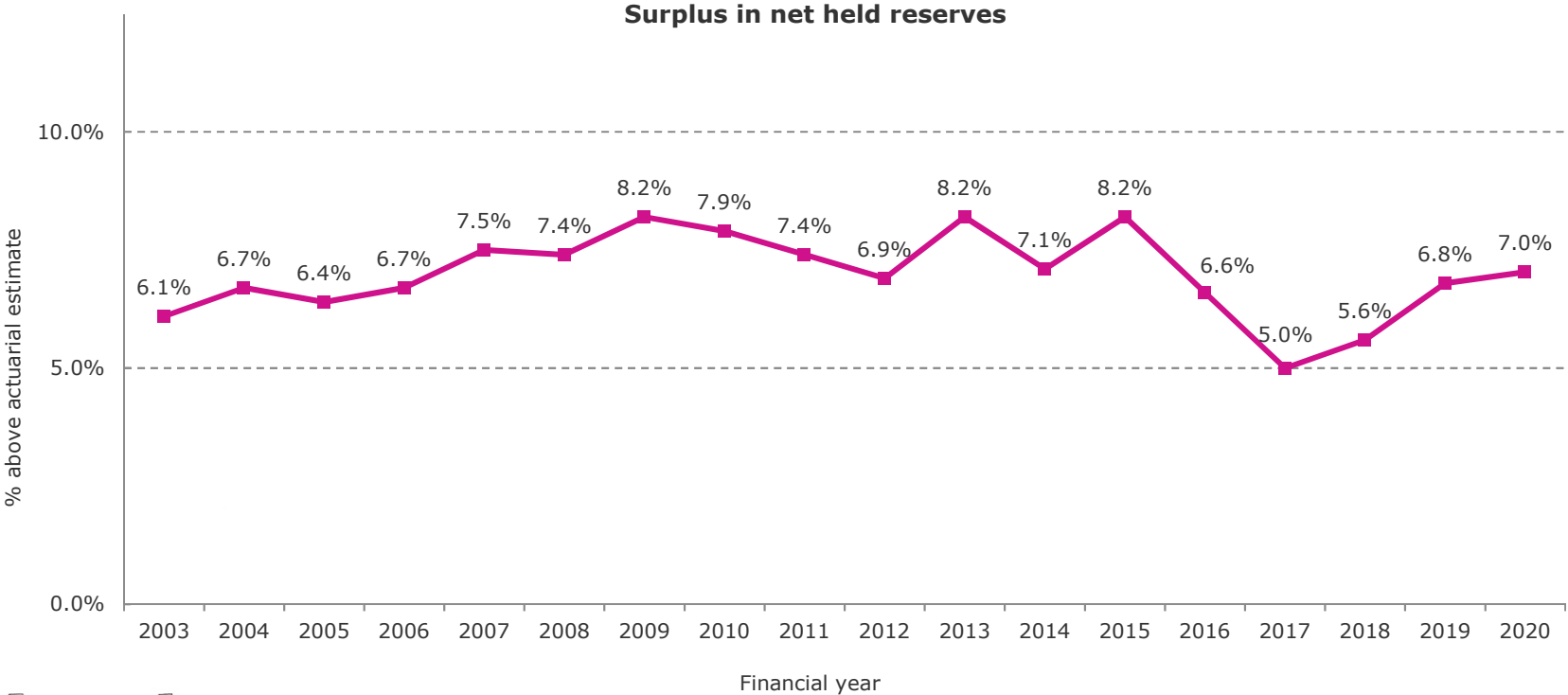
Core portfolio



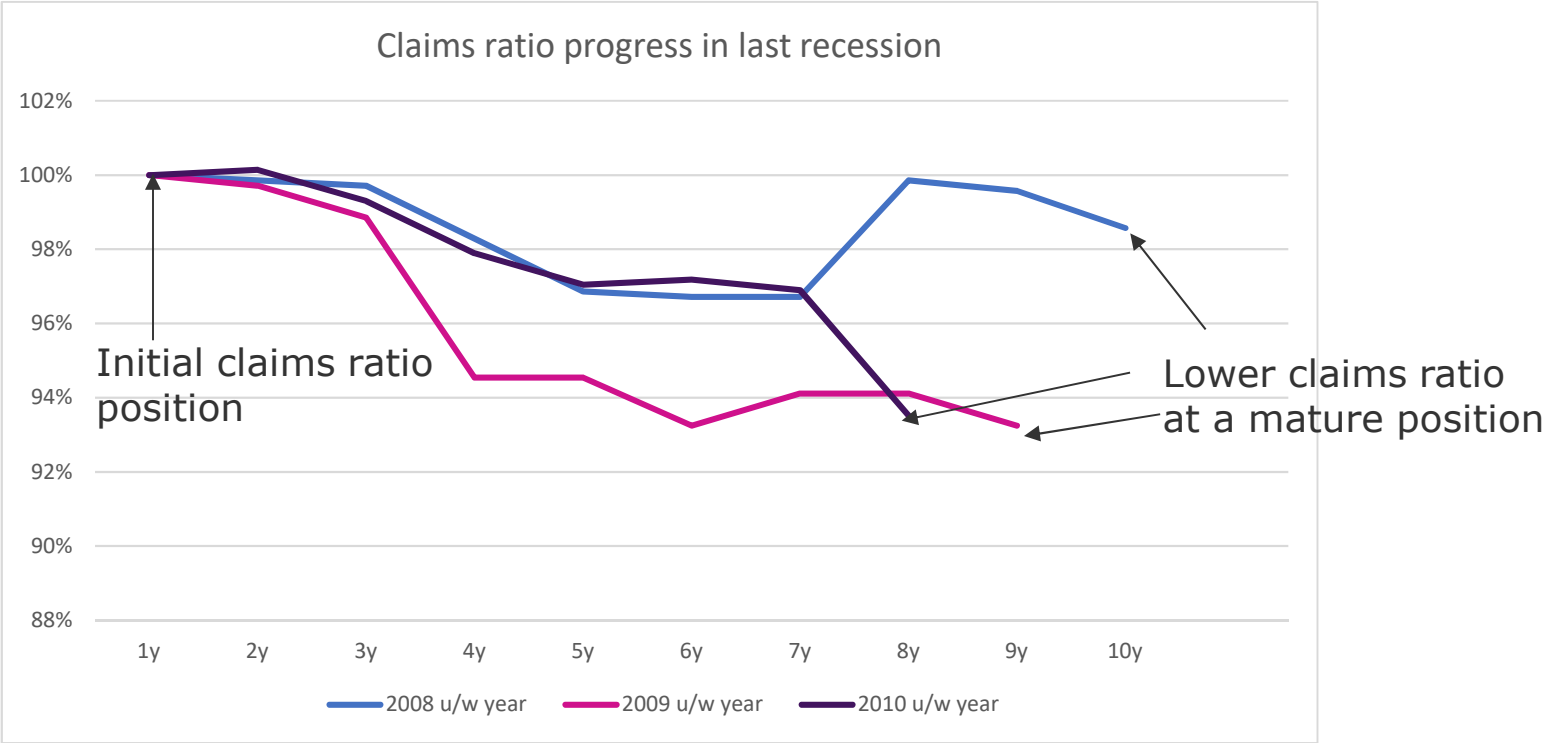
Claims releases more in line with historic levels



Consistent reserving strategy leads to improving surplus position



Our initial claims ratios were robust in last recession



Reinsurance protection of significant underwriting action in SL and CyEx

- Our claims made liability business has always been exposed to systemic issues and we have also been preparing for a recession for a number of years
- During 2020 we have focused on amending our underwriting to reduce the potential impact of claims arising from COVID-19 and recession
- Since 2014 we have purchased reinsurance cover which attaches just above our opening held position (in 2020 claims would need to increase by \$10m to attach to this reinsurance)
- The same cover is already purchased for 2021

Underwriting capital – in a strong position for market conditions

- Group capital requirement:

	Projected 31 Dec 2020 \$m	Year ended 31 Dec 2019 \$m
Lloyd's economic capital requirement (ECR)	1,996.5	1,828.4
Capital for US insurance company	301.4	203.9
	2,297.9	2,032.3

- Expect to be at 22% of Lloyd's ECR, which is within our target range of 15% - 25%
 - Surplus allows for growth into 2021 as well as SII adjustments
- Incorporates changing view of growth expectations for 2021 reflecting market conditions
- Banking facility now stands at \$450m (of which \$225m has been utilised)
- Equity raise of \$292.6m to help facilitate planned growth opportunities

In focus: Property

beazley

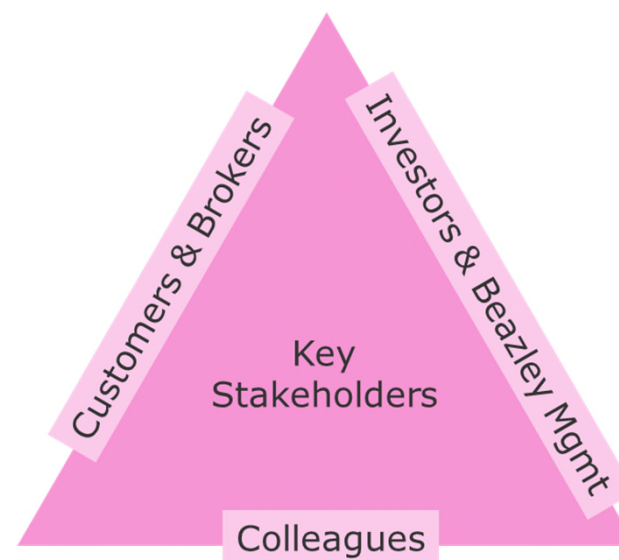
beautifully
designed
insurance

Vision & Strategy

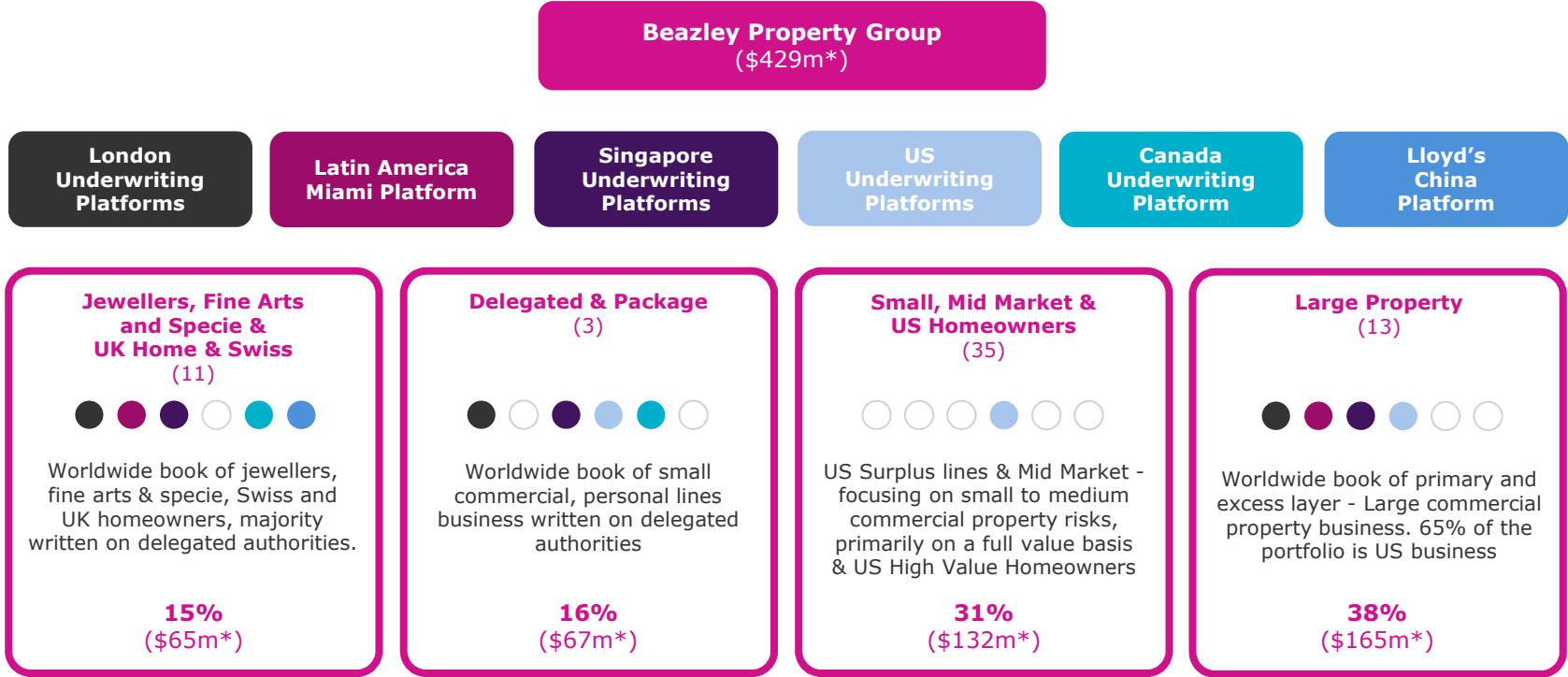
To become, and be recognised as, the highest performing specialist property insurer

Key performance indicators

- 15%+ return on capital
- Continued double-digit growth
- Above "Beazley average" broker survey result
- Top quartile engagement survey result



Our structure & products



*Premium as at 31 December 2019



Key areas of focus

- Tailored and optimised portfolio
- Active distribution management
- Empowered underwriting
- Investment in technology and processes
- Efficient use of capital

2020 Property outlook and beyond

- Expected premium growth +15% YOY
- Continued rate increases across portfolio
 - Large Commercial +22% YTD
 - Small & Mid Market +18% YTD
 - US Homeowners +14% YTD
- High retention on core business
- Favorable terms & conditions
- Ongoing improvement on attritional loss ratios

The outlook

beazley

beautifully
designed
insurance

Outlook

- Maintain double digit top line growth
- Continue to mitigate impact of COVID-19
 - Taking underwriting action on liability classes
- Expect combined ratio around 100% for 2020
- Expect lower investment return in second half of 2020 as fixed income assets yield just 0.8%.
- Expect rate momentum to continue
- Agile, nimble approach to meet post-COVID environment. Focus remains on:
 - People: Health & wellbeing; appointments e.g. sustainability and innovation
 - Product: Pivoting to meet demand - virtual events
 - Service: Flexible and scalable model - claims

Questions?

beazley

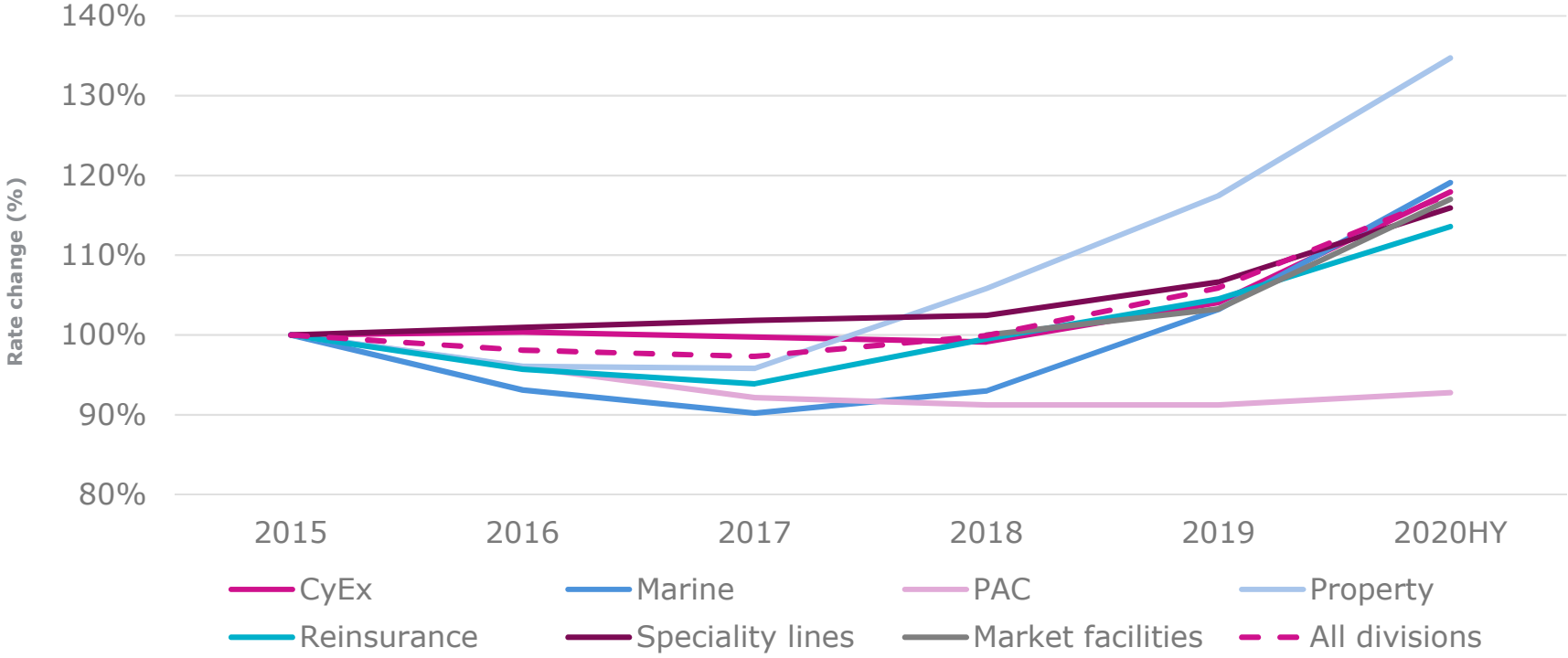
beautifully
designed
insurance

Appendix

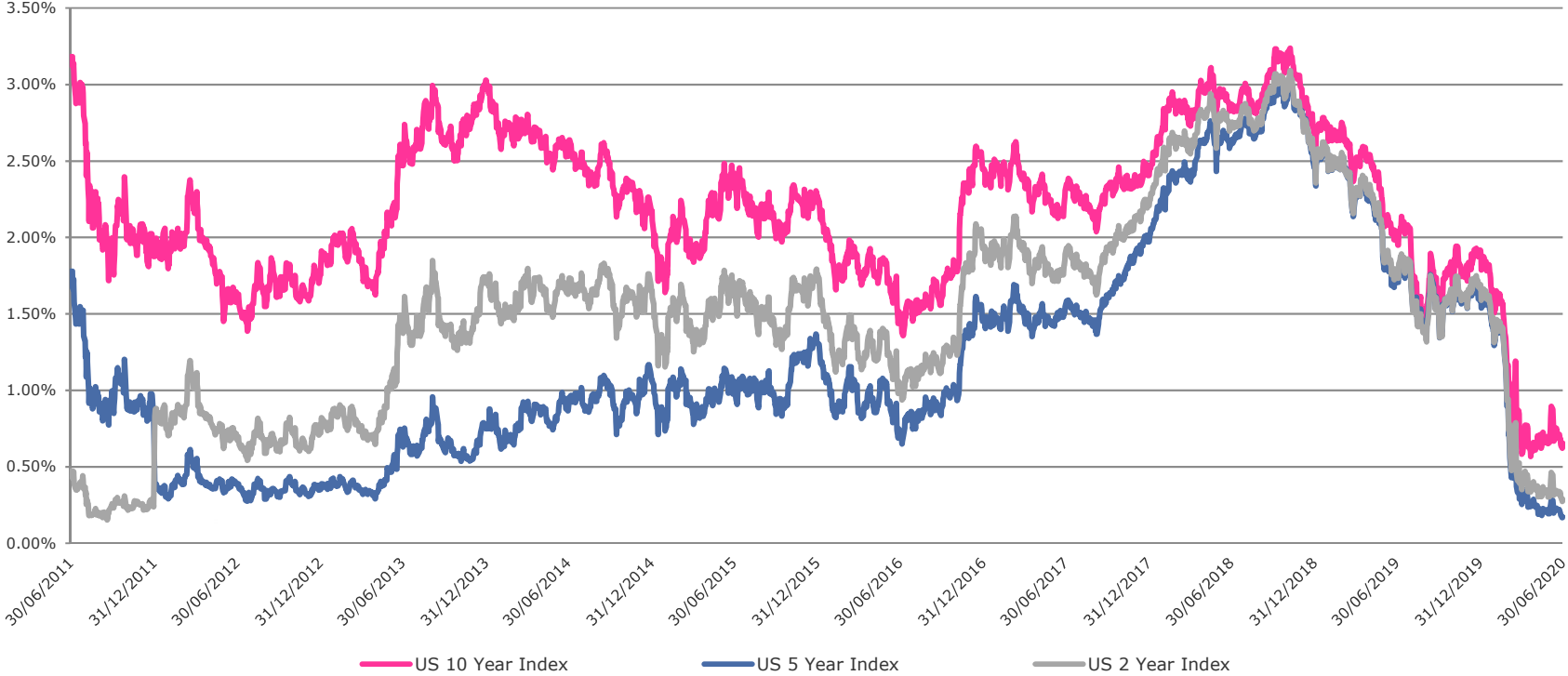
beazley

beautifully
designed
insurance

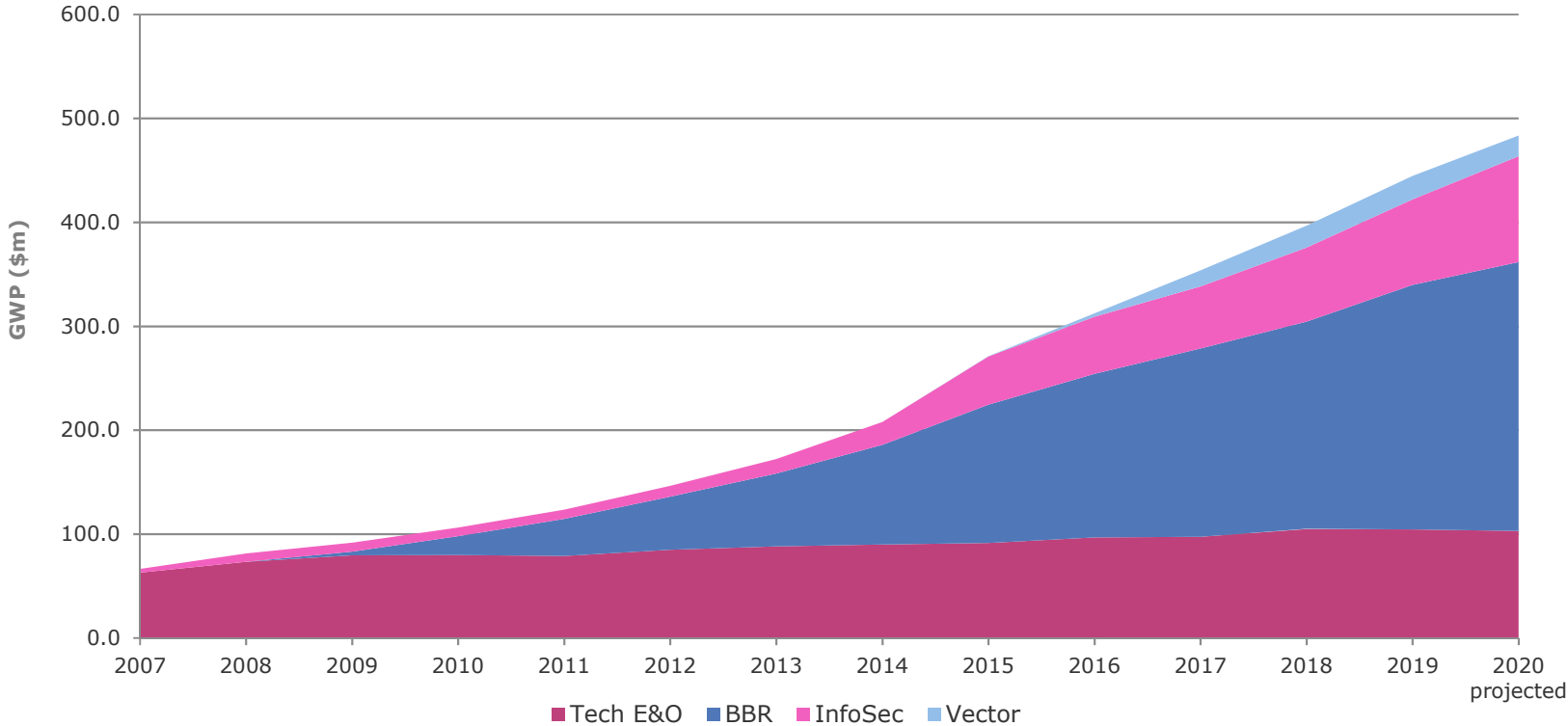
Cumulative rate change since 2015



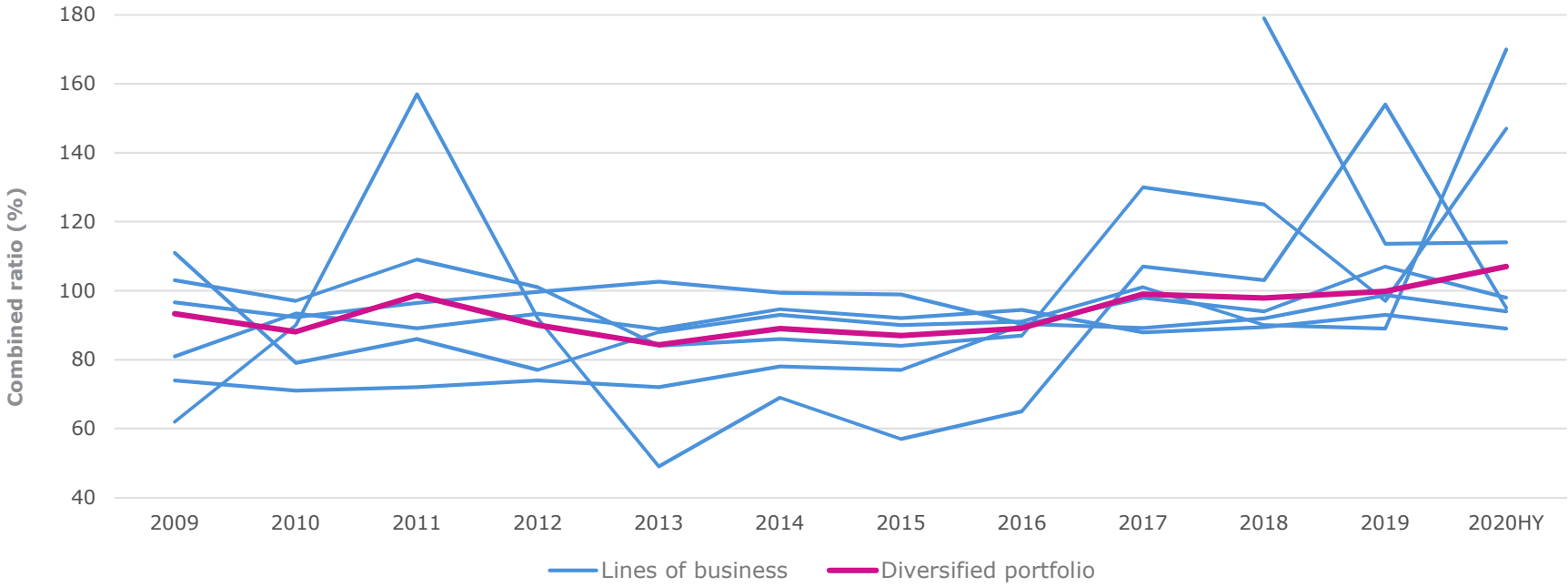
US interest rates



Cyber gross premiums written growth



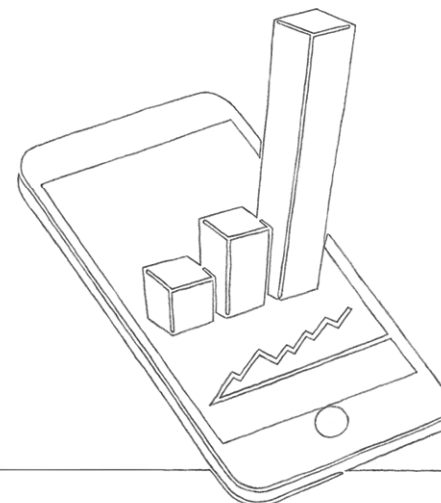
Portfolio management achieves consistent combined ratio through market cycles



Cyber & executive risk

	6 months ended 30 June	
	2020	2019
Gross premiums written (\$m)	419.6	348.1
Net premiums written (\$m)	360.7	303.9
Net earned premiums (\$m)	367.9	296.1
Claims ratio	59%	63%
Rate change on renewals	13%	4%
Percentage of business led	98%	100%

- 21% growth in gross premiums written
- Expense ratio at 30% (June 2019: 32%)



Marine

6 months ended 30 June

	2020	2019
Gross premiums written (\$m)	176.3	165.1
Net premiums written (\$m)	153.8	138.4
Net earned premiums (\$m)	141.3	134.2
Claims ratio	62%	68%
Rate change on renewals	15%	7%
Percentage of business led	54%	60%

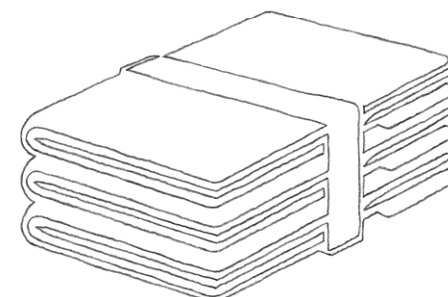
- Gross premiums written growth of 7%
- Improved combined ratio to 98% (June 2019: 108%)

Market facilities

6 months ended 30 June

	2020	2019
Gross premiums written (\$m)	60.7	22.2
Net premiums written (\$m)	17.5	9.5
Net earned premiums (\$m)	12.1	5.6
Claims ratio	29%	43%
Rate change on renewals	13%	1%
Percentage of business led	6%	6%

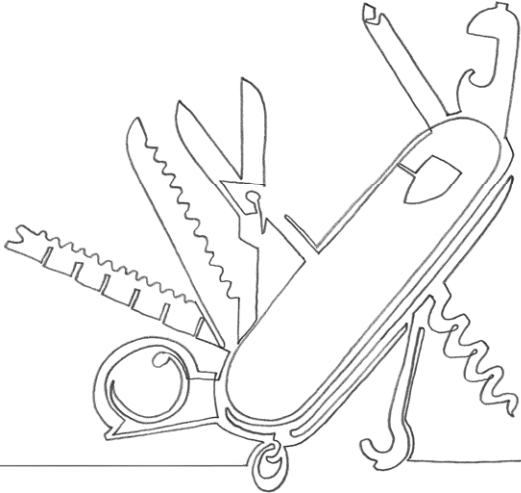
- Gross premiums written growth of 173%



Political, accident & contingency

	6 months ended 30 June	
	2020	2019
Gross premiums written (\$m)	150.8	145.9
Net premiums written (\$m)	110.8	126.0
Net earned premiums (\$m)	97.0	109.4
Claims ratio	120%	51%
Rate change on renewals	2%	(1%)
Percentage of business led	68%	71%

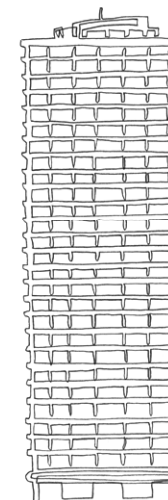
- Gross premiums written growth of 3%
- Combined ratio 170% (June 2019: 94%)
- Large impact from COVID-19



Property

	6 months ended 30 June	
	2020	2019
Gross premiums written (\$m)	233.5	230.9
Net premiums written (\$m)	183.8	180.7
Net earned premiums (\$m)	177.5	176.8
Claims ratio	110%	51%
Rate change on renewals	15%	9%
Percentage of business led	79%	79%

- 1% increase in gross premiums written. Strong growth in second quarter
- Combined ratio increased to 147% (June 2019:92%), largely due to impact of COVID-19
- Expense ratio improved

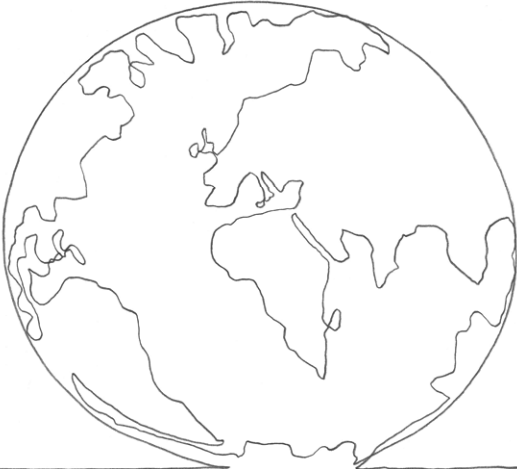


Reinsurance

6 months ended 30 June

	2020	2019
Gross premiums written (\$m)	151.0	161.4
Net premiums written (\$m)	92.1	97.8
Net earned premiums (\$m)	50.8	57.2
Claims ratio	55%	97%
Rate change on renewals	9%	4%
Percentage of business led	64%	49%

- Combined ratio decreased to 95% (June 2019: 140%)
- Improved expense ratio of 40% (June 2019: 43%)



Specialty lines

	6 months ended 30 June	
	2020	2019
Gross premiums written (\$m)	472.0	410.0
Net premiums written (\$m)	399.1	369.2
Net earned premiums (\$m)	387.2	338.7
Claims ratio	57%	62%
Rate change on renewals	9%	4%
Percentage of business led	92%	93%

- 15% growth in gross premiums written
- Improved expense ratio at 37% (June 2019: 39%)

beazley

